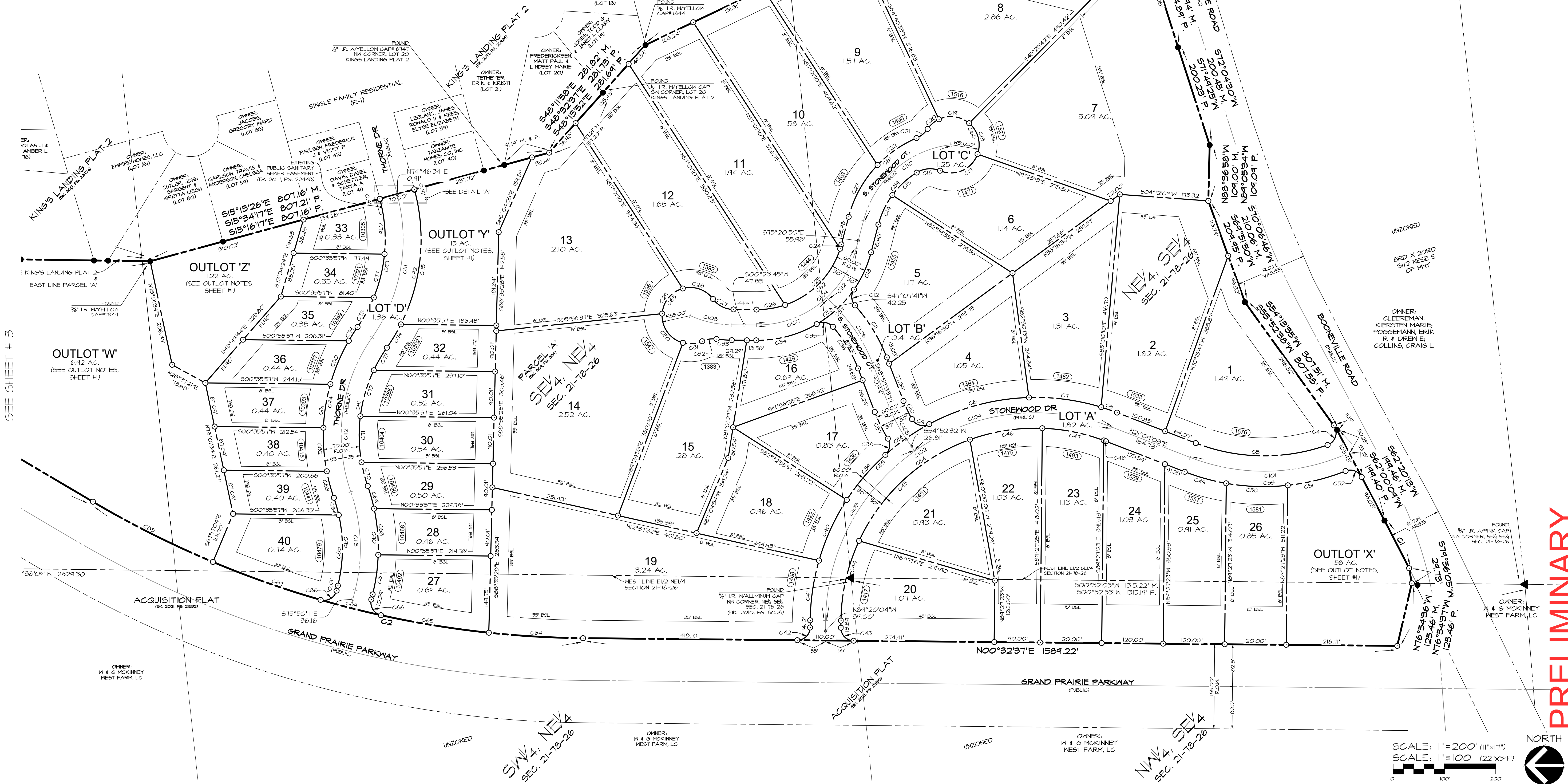


DETAIL 'A'
SCALE: 1"=10'

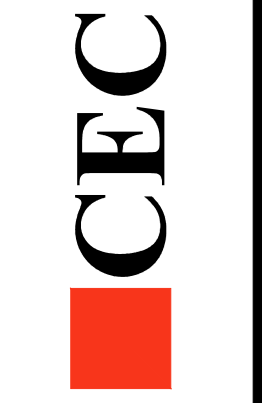


PRELIMINARY

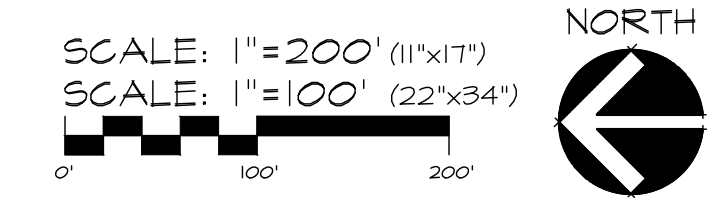
STONEWOOD PLAT 1
WEST DES MOINES, IOWA
DIMENSION PLAN (SOUTH)

SHEET 2 OF 6
A-2042

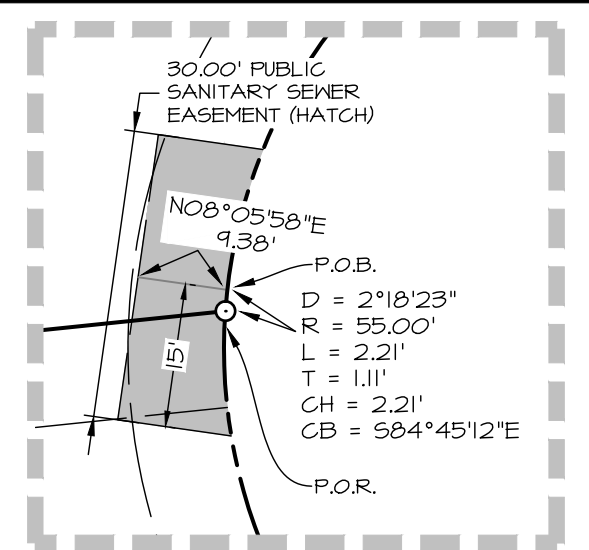
Civil Engineering Consultants, Inc.
2400 86th Street Unit 12 · Des Moines, Iowa 50322
515.276.4884 · mail@cecinc.com



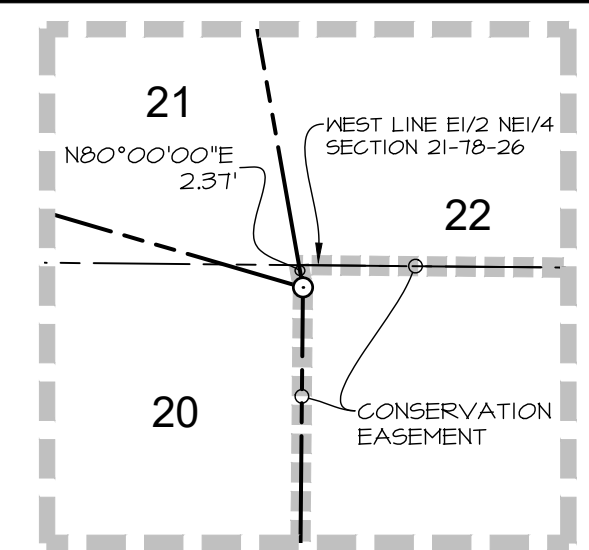
DATE:	DATE OF SURVEY:	DESIGNED BY:	DRAWN BY:
	FEBRUARY 12, 2021	JAG	LJH



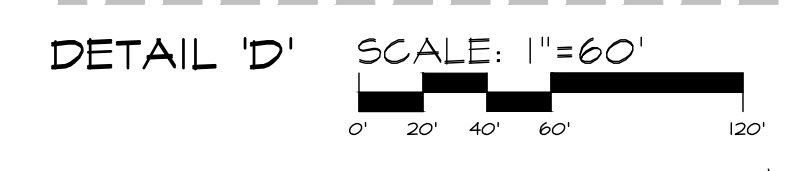
Q:\A-FILES\A-2000\A2042_C3D Drawings\Plat\Plat A2042 FP DIM.dwg, 7/6/2022 1:07:10 PM, jagsdds, 1:1



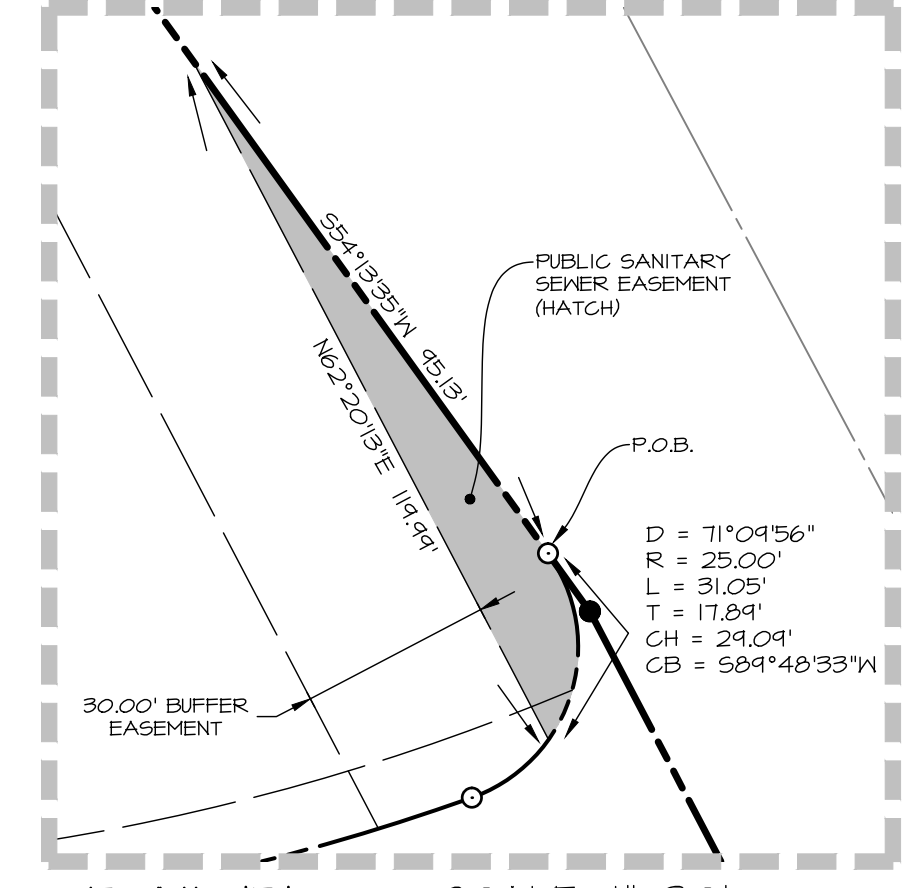
DETAIL 'A'
SCALE: 1"=20'



DETAIL 'C'
SCALE: 1"=20'



DETAIL 'D'
SCALE: 1"=60'



DETAIL 'B'
SCALE: 1"=30'

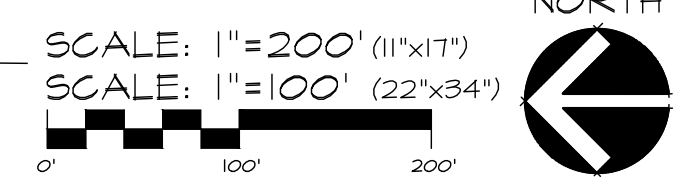
Civil Engineering Consultants, Inc.
2400 86th Street Unit 12 Des Moines, Iowa 50322
515.276.8884 mail@cecinc.com

DATE: _____
DATE OF SURVEY: FEBRUARY 12, 2021
DESIGNED BY: JAG
DRAWN BY: LJM

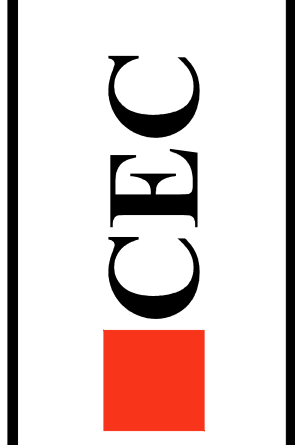
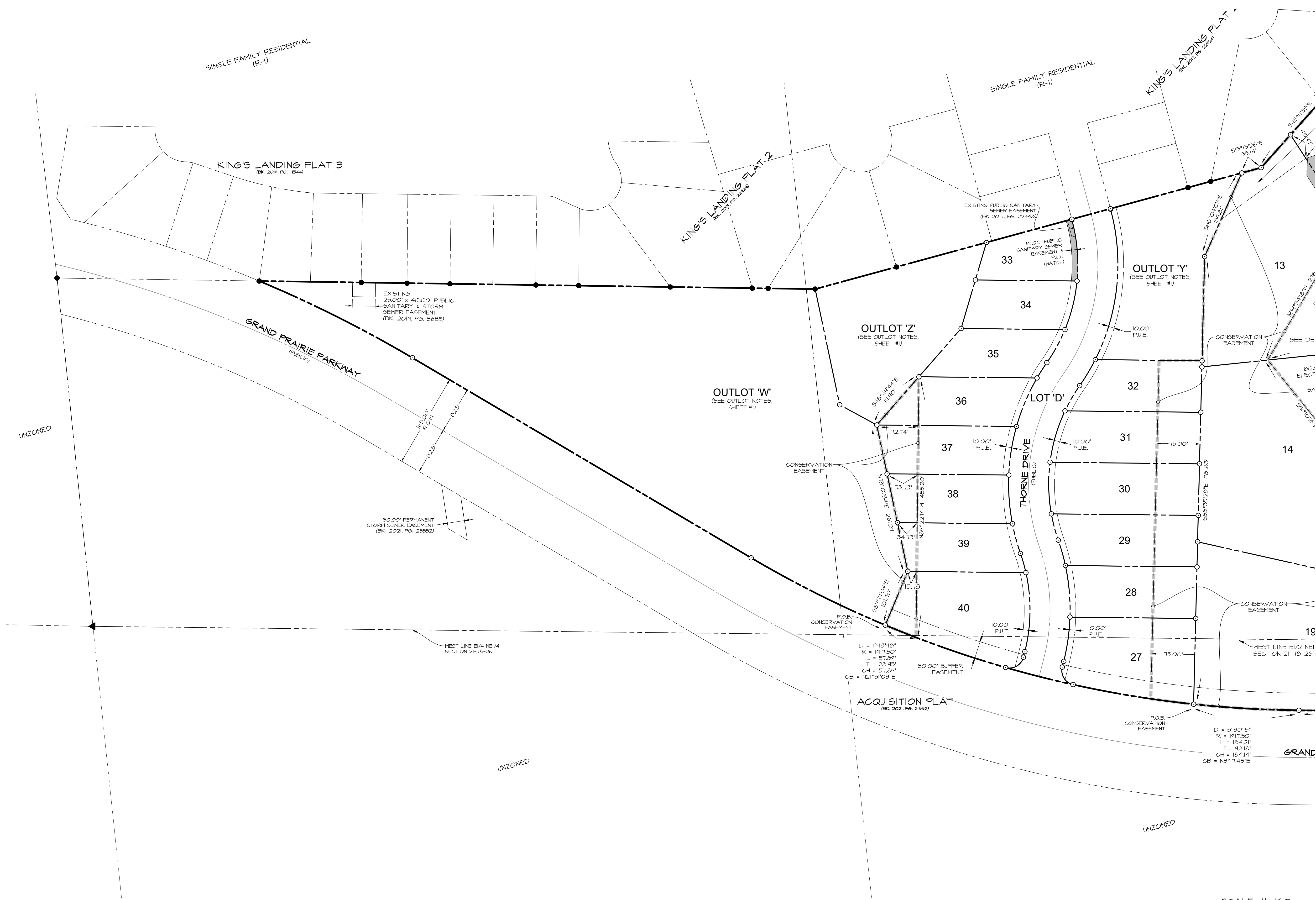
PRELIMINARY

STONEWOOD FLAT I
WEST DES MOINES, IOWA
EASEMENT PLAN (SOUTH)

SHEET 4 OF 6
A-2042



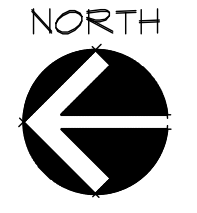
Q:\A-FILES\A-2000\A2042_CSD Drawings\Flat\Plan\A2042 FP EASE.dwg, 7/6/2022 1:07:14 PM, jagadis, 1:1



DATE:	FEBRUARY 12, 2021
DATE OF SURVEY:	FEBRUARY 12, 2021
DESIGNED BY:	JAS
DRAWN BY:	LJH

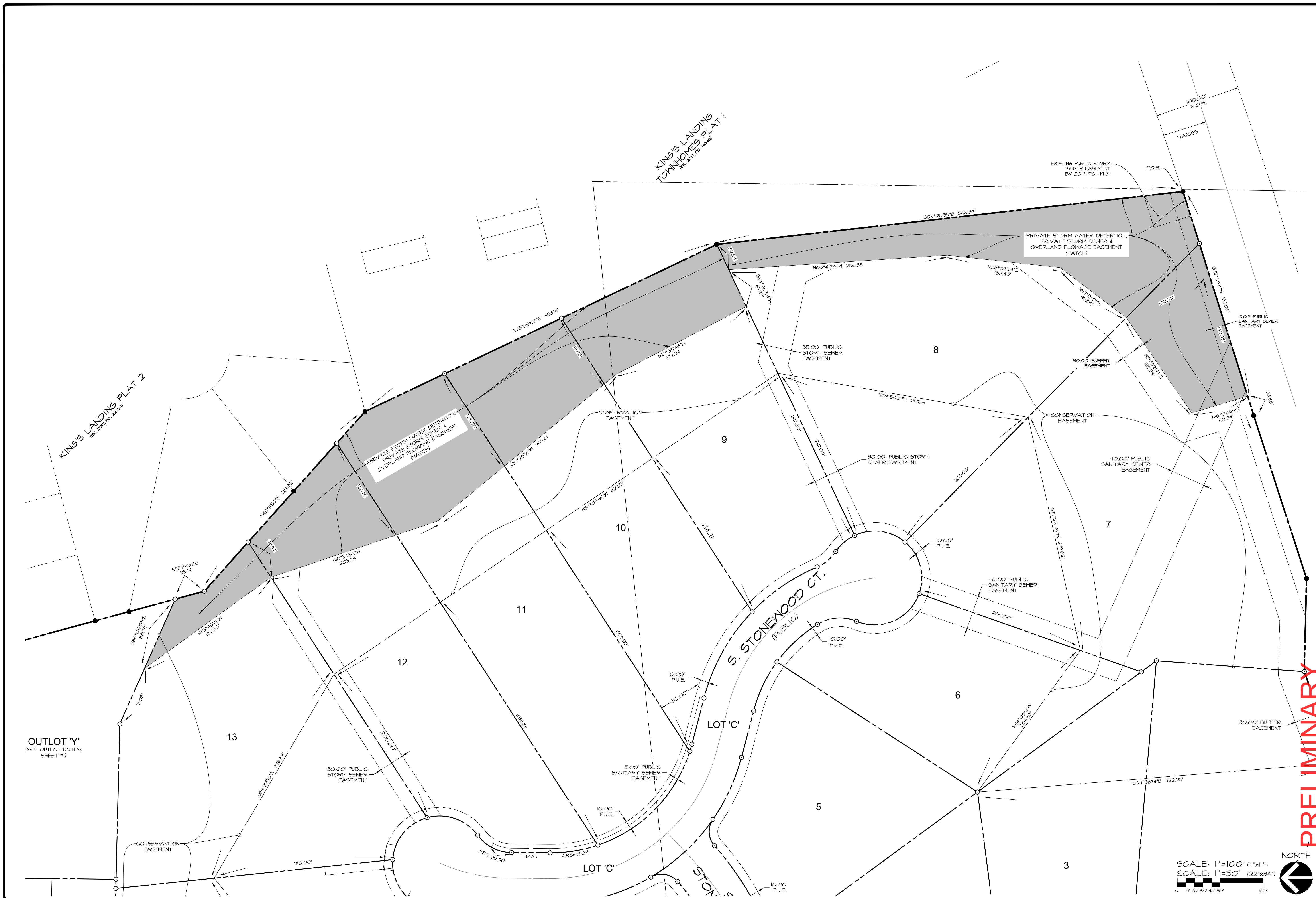
PRELIMINARY
STONEWOOD FLAT I
 WEST DES MOINES, IOWA
EASEMENT PLAN (NORTH)

SCALE: 1" = 160' (11"x17")
 SCALE: 1" = 80' (22"x34")



SHEET
 OF 6

Q:\A-FILES\A-2000\A2042_C3D Drawings\Plat\Final Plat\A2042 FP EASE.dwg, 7/6/2021 1:07:17 PM, jagadis, 1:1



KING'S LANDING PLAT 2
(BK 2011 PG. 248-249)

KING'S LANDING
TOWNHOMES PLAT 1
(BK 2004 PG. 189-190)

OUTLOT 'Y'
(SEE OUTLOT NOTES,
SHEET #1)

SCALE: 1"=100' (11"x17")
SCALE: 1"=50' (22"x34")

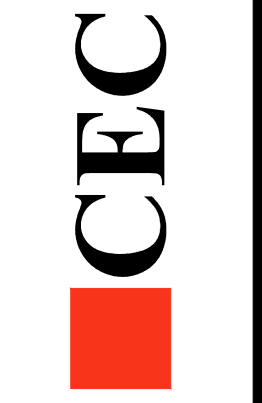


PRELIMINARY

STONEWOOD FLAT I
WEST DES MOINES, IOWA
EASEMENT DETAIL

SHEET
OF 6
A-2042

DATE:	FEBRUARY 12, 2021	DATE OF SURVEY:	FEBRUARY 12, 2021
DESIGNED BY:	JAG	DESIGNED BY:	JAG
DRAWN BY:	LJH	DRAWN BY:	LJH



Civil Engineering Consultants, Inc.
2400 86th Street, Unit 12 · Des Moines, Iowa 50322
515.276.4884 · mail@cecinc.com