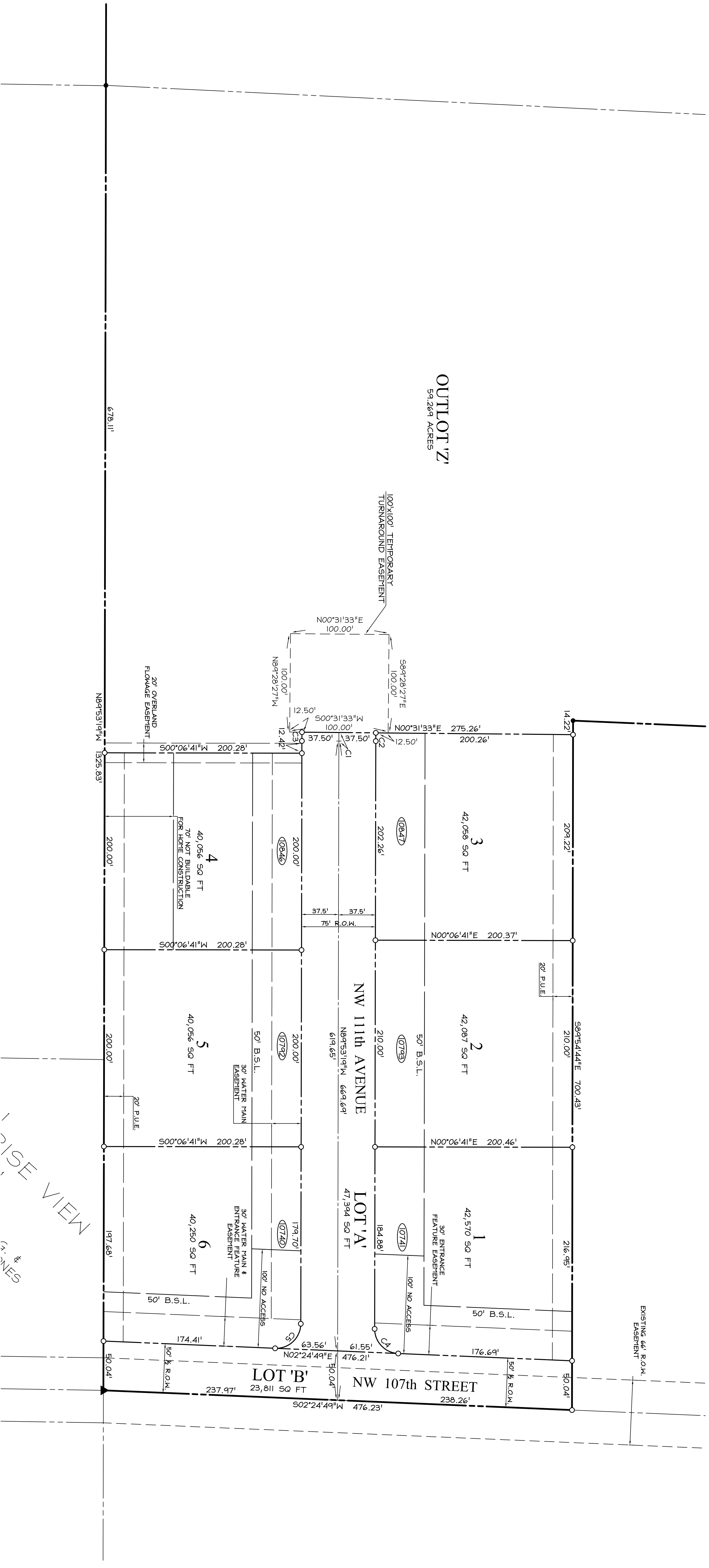


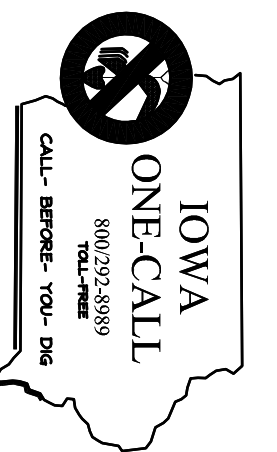
# FINAL PLAT THE RESERVE AT JESTER PARK

Sheet 2 of 2



CURVE TABLE				
CURVE	DELTA	RADIUS	LENGTH	TANGENT
C1	0°24'51"	1200.00	8.68	4.34
C2	0°24'51"	1162.50	8.40	4.20
C3	0°24'51"	1237.50	8.95	4.47
C4	87°41'53"	25.00	39.27	24.02
C5	92°18'07"	25.00	40.27	26.03

- LEGEND**
- PLAT BOUNDARY
  - ▲ SECTION CORNER
  - FOUND CORNER, AS NOTED
  - SET CORNER 5/8" I.R. W/ YELLOW CAP #13156
  - I.R. IRON ROD
  - G.P. GAS PIPE
  - D. DEEDED DISTANCE
  - M. MEASURED DISTANCE
  - R. PREVIOUSLY RECORDED DISTANCE
  - P.U.E. PUBLIC UTILITY EASEMENT
  - (333) ADDRESS
  - B.S.L. BUILDING SETBACK LINE
  - M.O.E. MINIMUM OPENING ELEVATION
  - M.P.E. MINIMUM PROTECTION ELEVATION
  - N.R. NOT RADIAL



**COOPER CRAWFORD & ASSOCIATES, L.L.C.**  
CIVIL ENGINEERS

475 S. 50th STREET, SUITE 800, WEST DES MOINES, IOWA 50265  
PHONE: (515) 224-1344 FAX: (515) 224-1345

DATE: 04/03/2015  
REVISIONS: 10/02/2015

APPROVED: SCALE: 1"=50'

INITIALED: AS-BUILT: FINAL PLAT

JOB NUMBER: **0624**

SHEET 2 OF 2